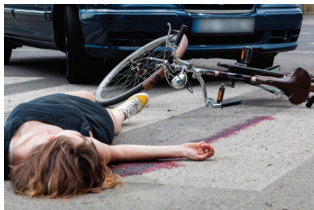


# CJEM JCMU

Vol. 17, No. 3  
May 2015/  
mai 2015

[cjem-online.ca](http://cjem-online.ca)



## Table of Contents • Table des matières

### EDITORIAL/COMMENTARY

- 227 Prehospital initiation of mild therapeutic hypothermia for out-of-hospital cardiac arrest (OHCA): where are we now?  
*Brian E. Grunau*
- 
- 231 Critically appraising noninferiority randomized controlled trials: a primer for emergency physicians  
*Mohammad Al Deeb, Aftab Azad, David Barbic*
- 

### LETTERS • CORRESPONDANCE

- 237 A note on non-inferiority margins (RE: Critically appraising noninferiority randomized controlled trials: a primer for emergency physicians)  
*Vance W. Berger*
- 
- 239 A response (RE: A note on non-inferiority margins)  
*Mohammad Al Deeb, Aftab Azad, David Barbic*
- 

### ORIGINAL RESEARCH • RECHERCHE ORIGINALE

#### EM Advances

- 240 Effect of prehospital initiation of therapeutic hypothermia in adults with cardiac arrest on time-to-target temperature  
*Eric M. Schenfeld, Jonathan Studnek, Alan C. Heffner, Marcy Nussbaum, Kathi Kraft, David A. Pearson*
- 
- 248 Rates of elastic compression stockings prescription following the diagnosis of deep venous thrombosis among Canadian emergency physicians and trainees  
*Ahmed Kayssi, Andrew Petrosoniak, Jeremy Levenstadt, Naomi Eisenberg, Sue Jenkins, Graham Roche-Nagle*
- 
- 253 Better performance on length-of-stay benchmarks associated with reduced risk following emergency department discharge: an observational cohort study  
*Michael Schull, Marian Vermeulen, Astrid Guttmann, Therese Stukel*
- 
- 263 Effect of a point-of-care ultrasound protocol on the diagnostic performance of medical learners during simulated cardiorespiratory scenarios  
*Adam R. Parks, Glenn Verheul, Denise LeBlanc-Duchin, Paul Atkinson*
- 
- 270 Ambulatory vital signs in the workup of pulmonary embolism using a standardized 3-minute walk test  
*Qamar Amin, Jeffrey J. Perry, Ian G. Stiell, Subhra Mohapatra, Abdulaziz Alsadoon, Marc Rodger*
-

## EDITORIAL/COMMENTARY

### EMS Series

- 279 Introducing the CJEM emergency medical services (EMS) series  
*Alix J. E. Carter, Michelle Welsford*
- 
- 281 Applying Hospital Evidence to Paramedicine: Issues of Indirectness, Validity and Knowledge Translation  
*Blair Bigham, Michelle Welsford*
- 

## METHODOLOGY

- 286 Does location matter? A proposed methodology to evaluate neighbourhood effects on cardiac arrest survival and bystander CPR  
*Jason E. Buick, Katherine S. Allan, Joel G. Ray, Alexander Kiss, Paul Dorian, Peter Gozdyra, Laurie J. Morrison*
- 

## INTERNATIONAL EM

- 295 International Federation for Emergency Medicine Model Curriculum for Continuing Professional Development  
*Cherri Hobgood, Terrence Mulligan, Gautam Bodiwala, Peter Cameron, James Holliman, James Kwan, Andrew Singer, Nicholas Jouriles*
- 

## KNOWLEDGE TO PRACTICE • DES CONNAISSANCES À LA PRATIQUE

### Diagnostic Challenge

- 310 Hemodynamically stable wide-complex tachycardia in a young patient  
*Sameer Shaikh, Teresa Chan, Saeed Darvish-Kazem, Craig Ainsworth*
- 

### Journal Club

- 315 Clopidogrel with aspirin versus aspirin alone in prevention of stroke following transient ischemic attack or acute minor stroke  
*Scott Seadon, Eddy Lang*
- 

## CASE REPORT • RAPPORT DE CAS

- 318 An unusual presentation of small bowel intussusception  
*Samantha Dankoff, Pramod Puligandla, Alana Beres, Farhan Bhanji*
- 

## HUMOUR AND HUMANITY

### The Penelope Gray-Allan Memorial CJEM Writing Award

- 322 Fault lines  
*Niresha Velmurugiah*
- 

## CAEP POSITION STATEMENT • DÉCLARATION DE L'ACMU

- 323 Improving bicycle safety in Canada  
*Eric Letovsky, Brian H. Rowe, Steven Marc Friedman, Carolyn Snider, Emily Sullivan*
- 

## EDITORIAL/COMMENTARY

### CAEP Academic Symposium Papers

- 328 Executive Summary of the CAEP 2014 Academic Symposium: How to Make Research Succeed in Your Department  
*Ian G. Stiell, Jennifer D. Artz, Jeffrey Perry, Christian Vaillancourt, Lisa Calder*
- 
- 334 CAEP 2014 Academic Symposium: "How to Make Research Succeed in Your Department: How to Develop and Train Career Researchers in Emergency Medicine"  
*Jeffrey J. Perry, Carolyn E. Snider, Jennifer D. Artz, Ian G. Stiell, Sedigheh Shaeri, Shelley McLeod, Natalie Le Sage, Corinne Hohl, Lisa A. Calder, Christian Vaillancourt, Brian Holroyd, Judd E. Hollander, Laurie J. Morrison*
-